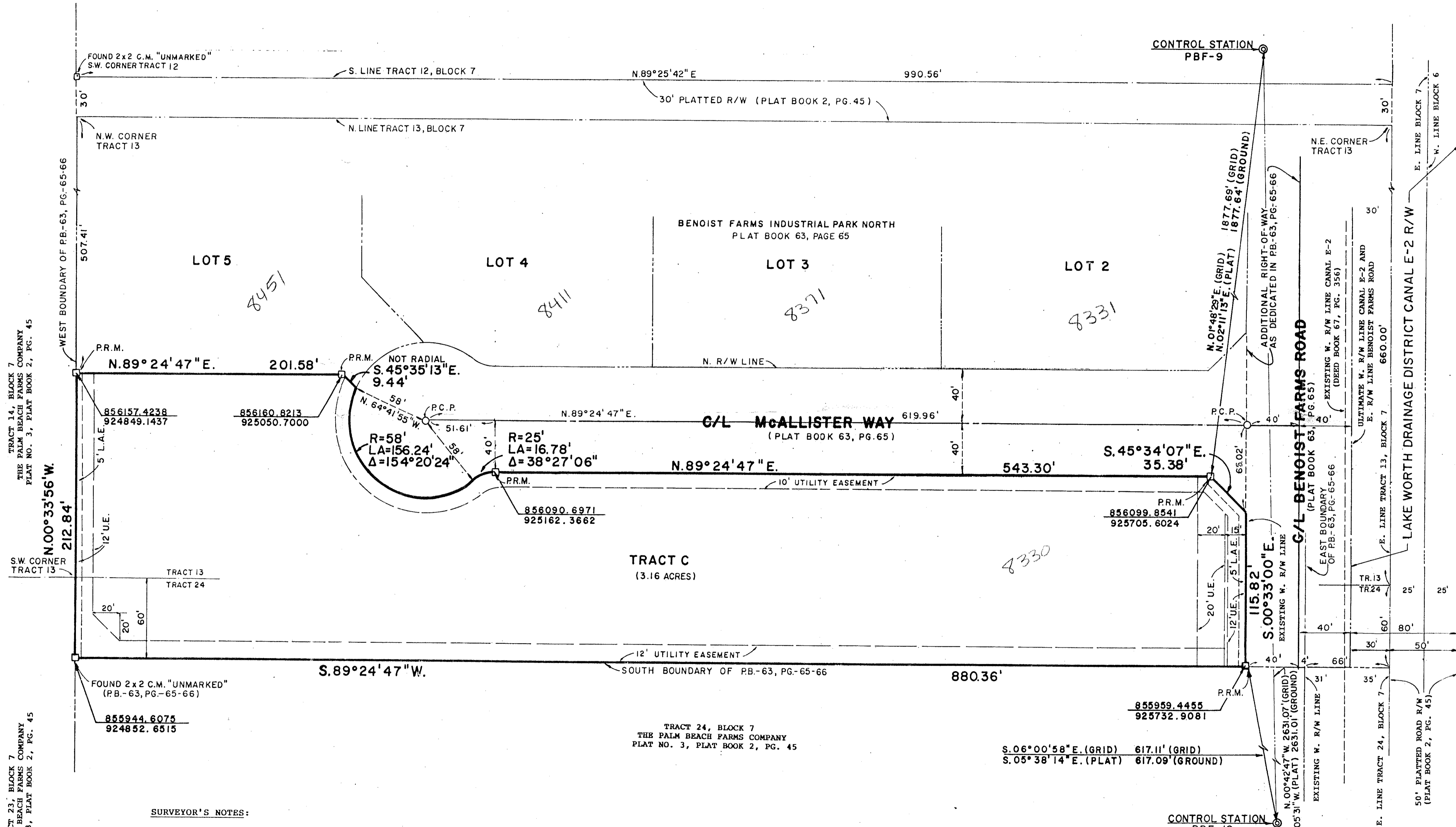


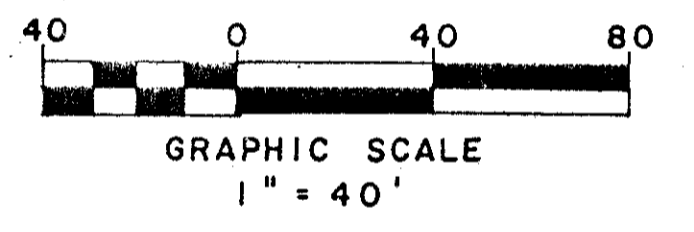
PLAT OF BENOIST FARMS INDUSTRIAL PARK NORTH TRACT C

BEING A REPLAT OF LOTS 1, 6 AND TRACT C, BENOIST FARMS INDUSTRIAL PARK NORTH, PLAT BOOK 63, PAGE 65, LYING IN SECTION 32, TOWNSHIP 43 SOUTH, RANGE 42 EAST, PALM BEACH COUNTY, FLORIDA.

SHEET 2 OF 2 JUNE, 1995



PET. 88-42
5/2/2/G



SURVEYOR'S NOTES:

- Bearing Base Reference: Plat bearing shown on East plat line of N.00 degrees 33'00"W. is relative to Palm Beach Farms Company Plat No. 3, in Plat Book 2, Page 45 and all other bearings shown hereon are relative thereto.
- Bearing Rotation Equation:
S.89 degrees 24'47" W. (plat bearing) vs.
S.89 degrees 02'03" W. (grid bearing) = bearing rotation of 00 degrees 22'44" counter clockwise (plat to grid)
- Coordinates shown are grid
Datum = NAD 83, 1990 Adjustment
Zone = Florida East
Linear unit = US Survey Foot/Meter
Coordinate system = 1983 State Plane Transverse Mercator Projection
- All distances are ground
Ground distance x scale factor = grid distance
Scale factor = 1.000024521
- All easements shown are existing as dedicated in Plat Book 63, Page 65 to 66.
- Abbreviations & Symbols:
 - = Permanent Reference Monument (P.R.M.)
 - = Permanent Control Point (P.C.P.)
 - L.A.E. = Limited Access Easement
 - U.E. = Utility Easement
 - C.M. = Concrete Monument
 - TR. = Tract
 - R/W = Right of Way
 - C/L = Center line

0545-002

NOTE: There may be additional restrictions that are not recorded on this plat that may be found in the Public Records of this County.

This instrument was prepared by: Donald D. Daniels
725 North A-1-A, Suite C-111
Jupiter, Florida 33477

76/86

REF. 32/43/42	Donald D. Daniels, Inc.	SCALE: 1" = 40'
OFFICE: FEB	PROFESSIONAL LAND SURVEYORS	NO.: 94-112.95
DATE: JUNE 1995	725 N. A1A • Suite C-111 • Jupiter, FL 33477 • 407-747-9894	SHT. 2 OF 2

BENOIST FARMS INDUSTRIAL PARK NORTH TRACT C

SUBDIVISION: BENOIST FARMS INDUSTRIAL PARK NORTH TRACT C
 BOOK 76 FLOOD ZONE A FLOOD MAP #150A
 ZONING I/L
 CHAD #46
 SE 88-42 ZIP CODE 33411
 PUD NAME SAME

TAZ-875